



Galvo Tech Fibre Laser Engraver

Power, precision, and versatility together in one exceptional fibre laser engraving system.

The LS6060 is designed for businesses that need fast, reliable results, it offers a generous 600 × 600 mm working area and a 100 W laser source that delivers ultra-smooth, high-speed marking.



Innovative Features:

Class I Laser System:

Fully enclosed design ensures maximum operator safety, allowing high-performance engraving in any workspace without additional shielding.

Massive Working Area:

A generous 600 × 600 mm workspace provides outstanding flexibility for larger components, batch production, and complex setups.

Trace and Frame with the Visible Laser:

A built-in guide laser makes positioning effortless, letting you preview your engraving area instantly for fast, accurate setup.

Exceptional Accuracy:

Premium galvo technology and high-quality optics deliver crisp, consistent marking results — ideal for detailed branding, coding, and precision components.

Protective Enclosure for Maximum Safety:

The class one safety enclosure keeps laser radiation contained, reduces noise, and creates a clean, controlled operating environment.

Incredibly Fast Marking Speeds:

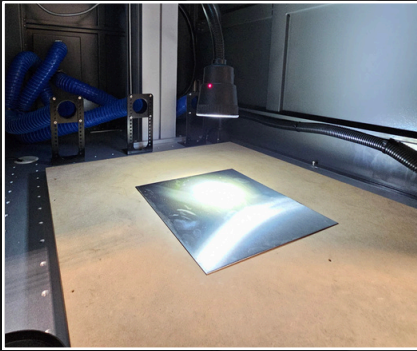
High-speed galvo performance enables rapid, repeatable engraving — perfect for boosting throughput in demanding production workflows.

Powerful Engraving Capabilities:

- > Coated metals
- > Aluminum
- > Brass
- > Copper
- > Precious Metals
- > Titanium
- > Carbides
- > Carbon Sheets
- > Stainless Steel
- > Alloys



The engraver's galvo technology and premium optics ensure crisp, consistent engraving every time, while the built-in visible laser makes setup quick and effortless. The Galvo Tech is ready for custom jigs, rotary attachments, and a wide range of production workflows.



Exceptionally Large Working Area



Digital Height Gauge



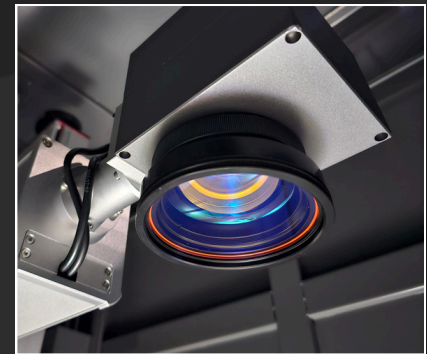
Internal Light



Laser Safe Viewing Window



Laptop/PC Mounting Platform
(Does not include laptop)



Premium Optics

LS6060 specification:

- Laser Power: 100W
- Max Engrave Depth (Single Pass): 0.5mm
- Laser Wavelength: 1064nm
- Max Engraving Speed: 3000mm/s
- Form Factor: Free-standing
- Laser Source: Raycus Solid State Q-Switched Fibre
- Engraving Area: 600mm × 600mm
- Height Adjustment: 500mm
- Location Precision: ±0.02mm
- Cooling Method: Self-Contained Air Cooling
- Fume Extraction: Separate air extraction unit supplied; optional fume filter available
- Extraction Hose: 150mm flexible hose – two pieces, 1500mm each (supplied)
- Connectivity: USB
- Software: EzCAD or Lightburn
- Preferred File Types: .dxf, bmp
- Operating System Support: Windows XP, 7, 8, 10, 11
- Minimum Character Size: 0.3mm
- Power Supply: 240 lph 50HZ
- Machine Dimensions (mm): 2413h (2829h with door open) × 1230d × 850w
- Weight: 600kg
- Machine Interface: 1 × USB; 1 × air extraction connection (150mm)
- Cabinet Safety: CE safety switches for lid and separately keyed power for one-key operation
- Warranty: 12-month on-site (excluding consumables)